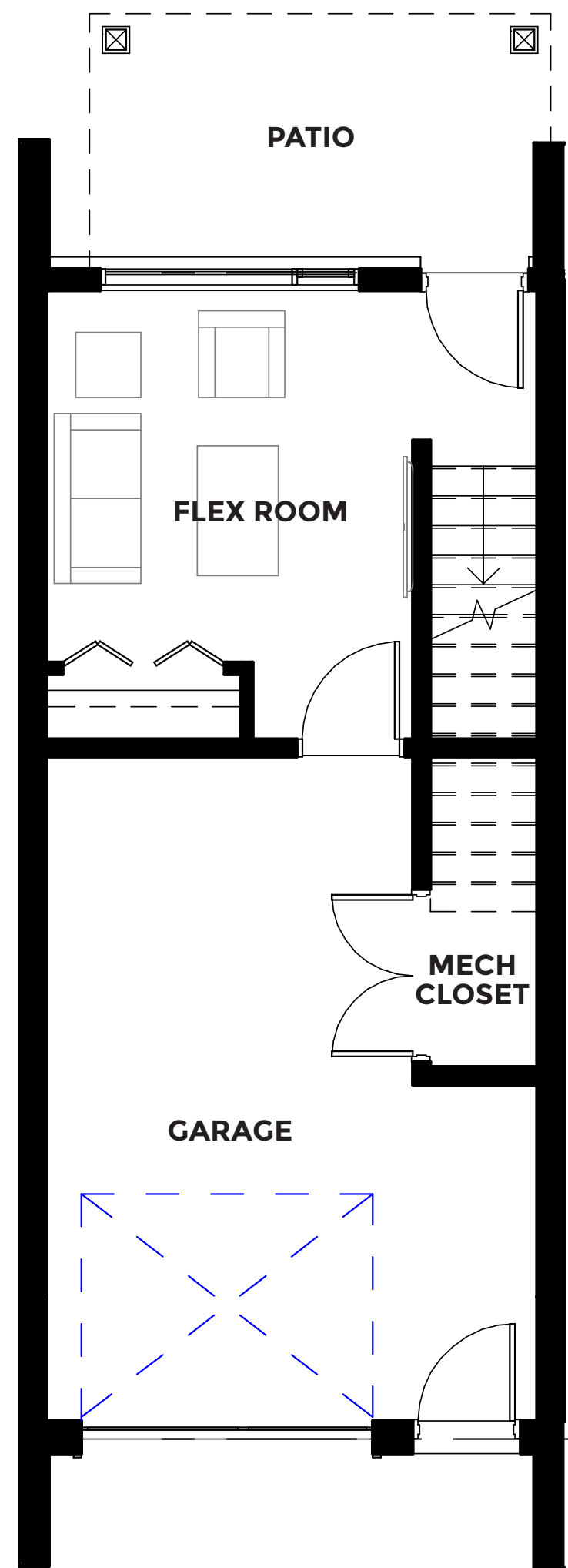
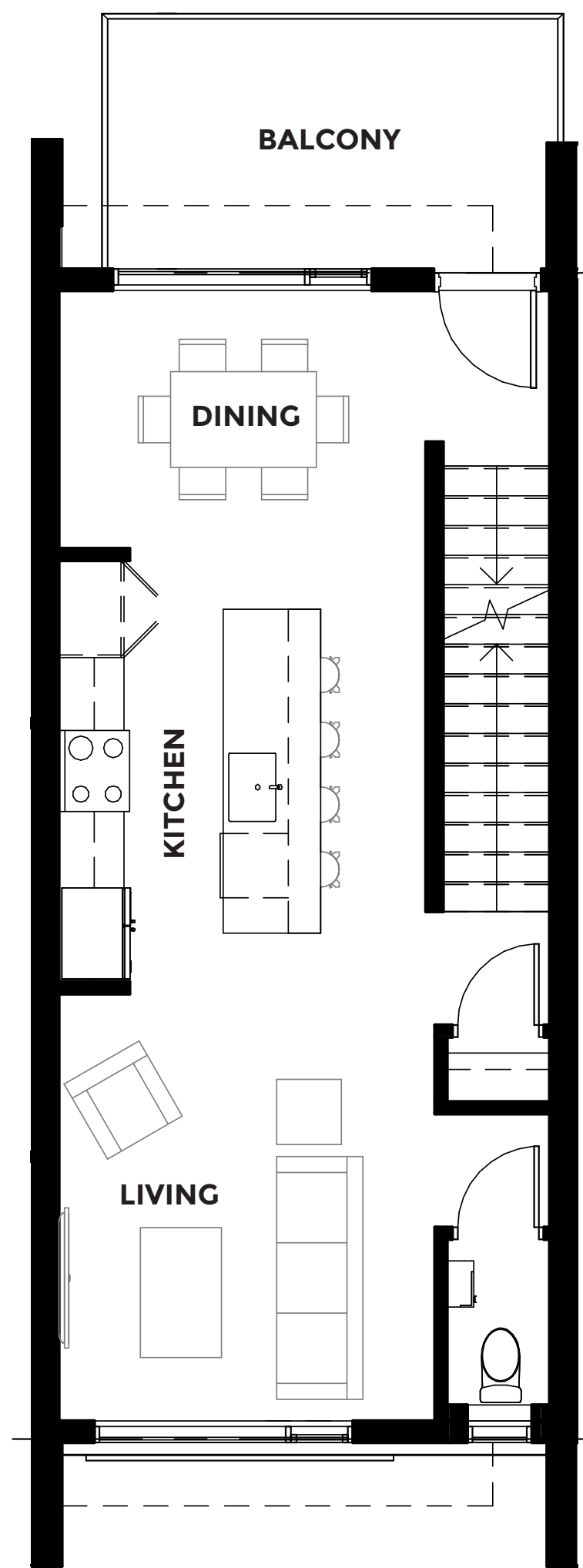


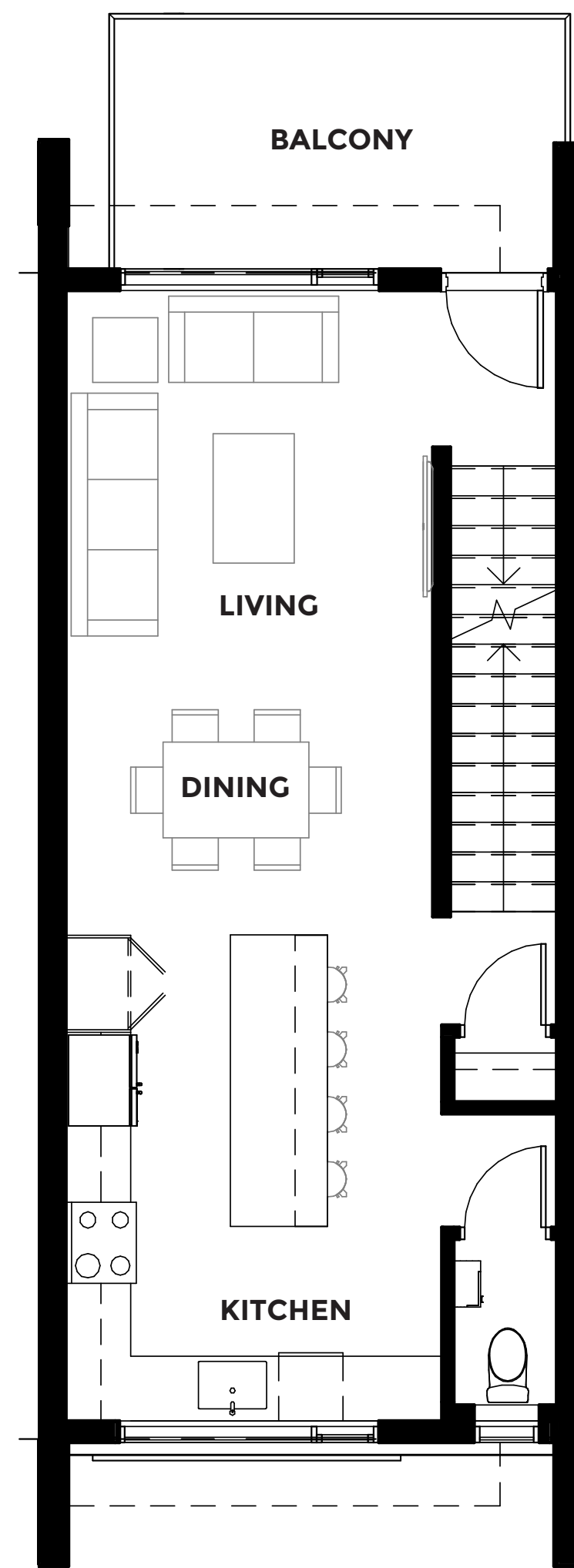
2



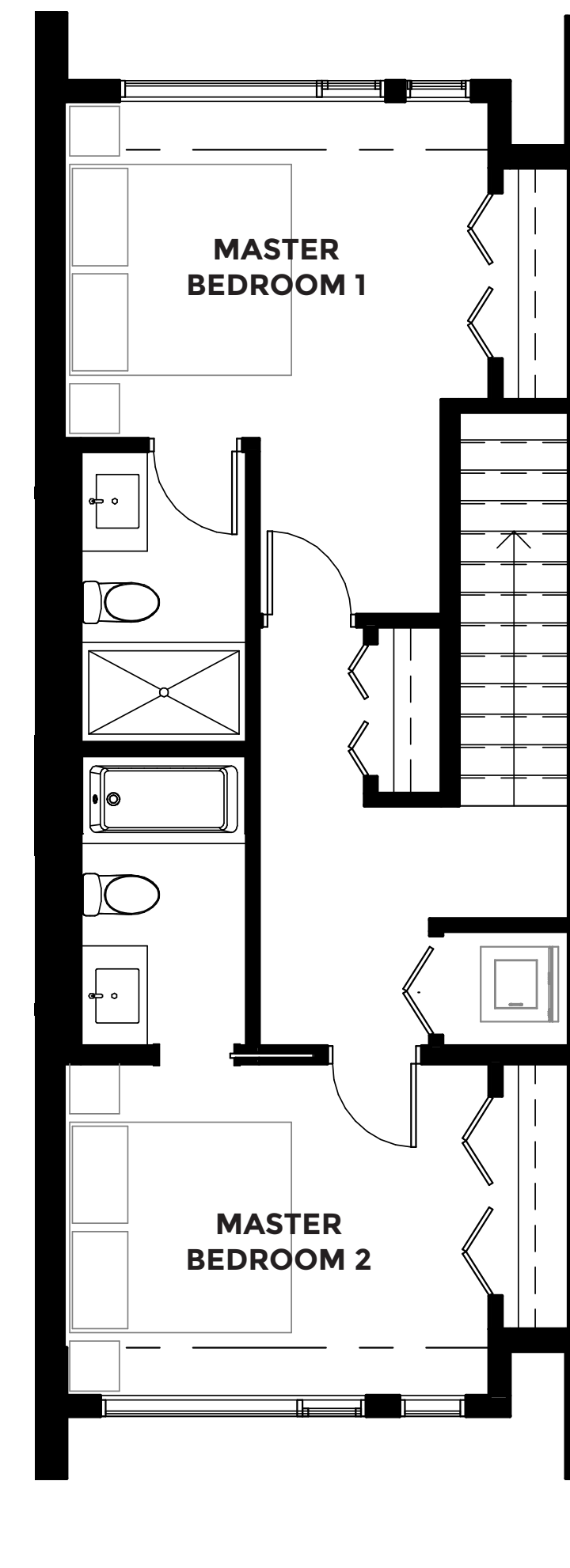
GROUND FLOOR



2ND FLOOR
MIDDLE KITCHEN OPTION



2ND FLOOR
END KITCHEN OPTION



3RD FLOOR

GROUND FLOOR	±235ft²
Mech Closet	±3'-3" x 9'-6"
Garage	± 15'-2" / 11'-4" x 20'-6"/10'-4"
Flex Room	±11'-4" x 11'-6"
SECOND FLOOR (OPT 1)	±576ft²
Living	±11'-4" x 13'-2"
Dining	±11'-4" x 8'-0"
Kitchen	±11'-4" x 13'-0"
Powder	±3'-2" x 5'-1"
Balcony	±7'-10 1/2" x 14'-3"
SECOND FLOOR (OPT 2)	±576ft²
Living	±11'-4" x 11'-0"
Dining	±11'-4" x 9'-0"
Kitchen	±11'-7" x 15'-0"
Powder	±3'-2" x 5'-1"
Balcony	±7'-10 1/2" x 14'-3"
THIRD FLOOR	±631ft²
Master Bedroom 1	±12'-9" x 10'-2"
Master Bedroom 2	±12'-9" x 10'-2"
Laundry	±3'-9" x 3'-5"
WC	±5'-0" x 8'-9"

PLAN 2 ± 1,442 FT²

16' X 36' 3-STOREY TOWNHOME - DBL MASTER W/ KITCHEN OPTIONS